



**NED UNIVERSITY OF ENGINEERING & TECHNOLOGY**  
**PROCUREMENT CELL**

Phone # 99261261-8, (Ext # 2291), Fax # 99261255,  
 E-mail: [dp@neduet.edu.pk](mailto:dp@neduet.edu.pk)



**"Say No to Corruption"**

**Work Order**

No. DP/COS-143226/ 7049/ 57  
 Dated: 10-03-2022

M/s. Brick & Wire (Pvt) Ltd.  
 Office No. 74 & 75 Habib Chamber  
 Near Civic Center  
 Karachi  
 Cell: 0316-1616476  
 Email: [aziz.brickandwire@gmail.com](mailto:aziz.brickandwire@gmail.com)

**Sub: Construction of Toilet Block at G.C.R. NED Main Campus**

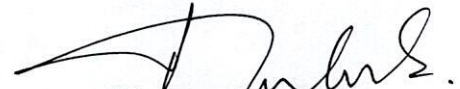
**Ref: PC/NED/DWS/Construction/7049/2022**

It is informed that the Competent Authority of this University has been pleased to approve the award of work "Construction of Toilet Block at G.C.R. NED Main Campus" as per terms & conditions and BOQ items of the bidding documents with total cost of **Rs. 1,889,333/-** (inclusive of all federal and provincial taxes and duties) to your firm.

You are required to attend the Office of Directorate of Works & Services at the earliest to complete the requirements for executing the Contract Agreement and furnish the Performance Bond. You are further required to start the subject Work within 14 days from the date of receipt of this letter. The time for completion of work is Three (03) months with maintenance work period of Six (06) months from the date of completion. The date of commencement is 24-03-2022.

You are advised to return the copy of this letter duly signed by you in token of acceptance of an undertaking the subject work as per terms and conditions and BoQ items mentioned in the above referred Tender Documents.

With regards,

  
**Director Procurement**  
 10.03.2022

Copy via email:

1. DWS [[ds@neduet.edu.pk](mailto:ds@neduet.edu.pk)]
2. DF [[df@neduet.edu.pk](mailto:df@neduet.edu.pk)]
3. RA [[ra@neduet.edu.pk](mailto:ra@neduet.edu.pk)]



**NED UNIVERSITY OF ENGINEERING & TECHNOLOGY**  
(Directorate of Works & Services)

Subject: CONSTRUCTION OF TOILET BLOCK AT G.C.R NED  
MAIN CAMPUS

| Sr. No.                                 | PWD Schedule 2012       | Description   | Qty.     | Rate (Rs.) | Amount (Rs.) |
|---|-------------------------|---|----------|------------|--------------|
| <b>"A" Civil Works (Schedule Items)</b> |                         |   |          |            |              |
| 01                                      | Code # 123<br>Item # 13 | Dismantling lime or cement concrete in foundation or under floor basement, plinth and ground floor and disposing of surplus material as directed within three chains (91.5 m)..   | 1150 Cft | 11.82      | 13,593.00    |
| 02                                      | Code # 103<br>Item # 01 | Excavation for foundation trenches and drains in all kinds of soil (except gravelly and muru m soil, wet silt, clay or mud conglomeration of gravel and boulders, soft, sandy or disintegrated sandy and hard rock) and back filling the excavated material in foundation, plinth or under floor breaking clods, watering, consolidation by ramming in layers not exceeding 9 inches (229 mm) in depth to full compaction, dressing and disposal of surplus excavated stuff as directed, lead up to one chain (30.5 R.m) and lift upto 5 feet (1.52 m). | 810 Cft  | 5.35       | 4,333.50     |
| 03                                      | Code # 105<br>Item # 12 | Providing and laying 1:4:8 (1 cement 4 sand and 8 coarse aggregate) cement concrete using graded stone ballast 3 inches (76 mm) and down gauge in foundation including levelling, compacting and curing etc. complete.  | 190 Cft  | 100.85     | 19,161.50    |
| 04                                      | Code # 110<br>Item # 02 | Providing and laying 1:3:6 cement concrete solid block masonry more than 6 inches (152 mm) thick using graded screened bajri 3/4 inch (19 mm) and down gauge set in lime cement mortar 1:1:6 in foundation, basement and plinth including scaffolding, raking out joints and curing etc. complete; foundation and basement masonry upto 5 feet (1.52 Ru.m.) depth and plinth upto 4 feet (1.2 Ru.m.) height from ground level.  | 493 Cft  | 131.84     | 64,997.12    |
| 05                                      | Code # 110<br>Item # 34 | Providing and laying 1:3:6 cement concrete solid block masonry more than 6 inches (152 mm) thick using graded screened bajri 3/4 inch (19 mm) and down gauge set in lime cement mortar 1:1:6 including scaffolding, raking out joints and curing etc. complete in ground floor superstructure.  | 500 Cft  | 138.10     | 69,050.00    |
| 06                                      | Code # 122<br>Item # 04 | 1/2" (13 mm) thick cement plaster 1:4 on walls and columns etc. in basement, plinth, mezzanine and ground floor including making edges, corners, and curing etc. complete.  | 1325 Sft | 19.13      | 25,347.25    |
| 07                                      | Code # 122<br>Item # 08 | 3/4" (19 mm) thick cement plaster 1:4 on walls and columns etc. in basement, plinth, mezzanine and ground floor including making edges, corners, and curing etc. complete.  | 1090 Sft | 23.67      | 25,800.30    |
| 08                                      | Code # 116<br>Item # 62 | Providing and fixing pre-cast pre-stressed RCC girders size 4"x9" (100mm x 229mm) made by Izhar (Pvt) Limited including setting in position with cement concrete 1:2:4 at ends of girder (sides and bottom) etc. as per direction of the Engineer-in-Charge.  | 160 Rft  | 210.56     | 33,689.60    |
| 09                                      | Code # 116<br>Item # 58 | Providing and fixing pre-cast RCC slab length 3'-0" to 4'-6" and width 1'-6" to 2'-00 (914mm to 1372mm x 457mm to 610mm) made by Izhar (Pvt) Limited including setting in position and filling the joints with cement mortar 1:4 etc. complete as per direction of the Engineer-in-Charge.  | 520 Sft  | 50.62      | 26,322.40    |
| 10                                      | Code # 117<br>Item # 2  | Providing and laying 1:4:8 cement concrete bed under floors using graded stone ballast 2 inches (51 mm) and down gauge with levelling and ramming, watering and curing etc. complete.   | 266 Cft  | 103.15     | 27,437.90    |
| 11                                      | Code # 114<br>Item # 38 | Providing and laying reinforced cement concrete using screened graded bajri 3/4 inch (19 mm) and down gauge having a minimum works cube crushing strength of 2250 lbs. per sq inch (15.52 N/mm <sup>2</sup> ) at 28 days with a mix not lesser than 1:2:4 in straight beams, lintels cantilever beams of required shape or section including form work and its removal, compacting and curing etc. complete but excluding the cost of reinforcement, in basement and ground floor.  | 20 Cft   | 197.79     | 3,955.80     |

**Brick & Wire**  
**Pvt. Ltd.**



429 435

| Sr. No. | PWD Schedule 2012        | Description   | Qty.     | Rate (Rs.) | Amount (Rs.) |
|---------|--------------------------|---|----------|------------|--------------|
| 12      | Code # 117<br>Item # 128 | Providing and laying floor of 2 inches (51 mm) thick 1:2:4 reinforced cement concrete using graded screened bajri 3/4" (19 mm) and down gauge in ground floor including form work, consolidation, finishing and curing etc. complete but excluding the cost of reinforcement.   | 1086 Sft | 30.47      | 33,090.42    |
| 13      | Code # 119<br>Item # 44  | Providing and fixing M.S. moulded steel door frames of 5.73" x 2-1/2" (146 mm x 63 mm) manufactured from mild steel sheet of 18 gauge (1.41 mm) conforming to B.S.S. 1245 having a double rebate size 1-1/2" x 1/2" (38 mm x 12 mm) provision of 3 Nos. M.S. plate, section 1-1/2" x 1/4" (38 mm x 6 mm) (2 Nos. 6 inch long welded with frame at not less than 10 points and 1 Nos. 12 inch long welded with frame at not less than 20 points), with holes and threads for fixing steel hinges, fitted with one locking box of same sheet (point welded inside the frame), 6 Nos. 6 inches long flat iron fixing lugs of 1-1/4" x 3/16" section, treated with special red oxide primer coat all around including cutting holes and filling the cavity with cement concrete 1:2:4 etc. in any floor at any height complete as directed by the Engineer-in-Charge  | 150 Rft  | 185.34     | 27,801.00    |
| 14      | Code # 120<br>Item # 61  | Providing and fixing solid core 1st class deodar wood veneered flush door shutter 1-1/2 inches (38 mm) thickness with and including the cost of commercial veneer facing of not less than 1 mm thickness on either side, cross band of standard specification with solid fully laminated core, 2 inches (51 mm) wide best quality deodar wood outer faces allround as commercially produced by standard manufacturers under power driven hydraulic press as approved by Engineer-in-charge including iron fittings etc., complete but excluding the cost of handles and locking arrangement.  | 147 Sft  | 571.68     | 84,036.96    |
| 15      | Code # 119<br>Item # 94  | Providing and fixing fully glazed Champagne anodized aluminum Sliding windows as per British standard manufactured by Lucky, Alcop, Krudson, Pakistan cable and A.C.P (fixing through their approved fabricators), Prime model box section 101mm x 30mm and 1.6mm thick including the cost of aluminum netting, fittings, with all accessories cutting hole etc. and making good damages to walls etc. complete as required in any floor as per direction of engineer-in-charge, but excluding the cost of glass pans.  | 40 Sft   | 524.70     | 20,988.00    |
| 16      | Code # 119<br>Item # 120 | Providing and fixing Tinted glass panes 5mm thick to M.S. Box pipe / Aluminum doors, windows and ventilators etc including the cost of labour but excluding the cost of M.S. square pipe beading, rubber packing and screw in any floor at any height.  | 40 Sft   | 106.11     | 4,244.40     |
| 17      | Code # 121<br>Item # 74  | Providing and fixing with brass screws Alpha "W" lock knob set Plain Latch of approved design (Japan make) cutting wood to required shape and size with two operating keys as per direction of the Engineer-in-Charge   | 08 Nos.  | 1,406.66   | 11,253.28    |
| 18      | Code # 121<br>Item # 135 | Providing and fixing approved heavy type oxidized iron sliding or al drop bolts 12" x 3/4" (305 mm x 19 mm) size with necessary oxidized iron screws and oxidized iron bolts and nuts.  | 02 Nos.  | 351.12     | 702.24       |
| 19      | Code # 121<br>Item # 190 | Providing and fixing aluminum floor socket of approved size and section in floors for fixing tower bolts including cutting and making good the floor etc.   | 08 Nos.  | 60.25      | 482.00       |
| 20      | Code # 309<br>Item # 29  | Providing & fixing water tank made food grade polyethylene material 500 gallon supper tuff i/c cost of specials and cartage upto site as per direction of engineer in charge.   | 01 No.   | 19332.50   | 19,332.50    |
| 21      | Code # 315<br>Item # 01  | Providing manhole type 'A' size 2 feet x 1-1/2 feet or (610 mm x 457 mm) (inside dimensions) x 2 feet (610 mm) deep as per approved design and specifications complete for 4 inches to 12 inches (100 to 305 mm) dia pipes up to 3 feet-11 inches (1.19 m) depth with cast iron cover and frame 16 inches (406 mm) dia, inside (weight=1 Cwt.1 Qtr.) or 63.5 Kg. fixed in 4 inches (100 mm) thick RCC 1:2:4 slab, 8 inches (203 mm) thick c.c. 1:3:6 block masonry walls set in 1:3 c.m.; 6 inches (150 mm) thick 1:3:6 c.c. in foundation 1:2:4 c.c. in benching, 1/2 inches (13 mm) thick cement plaster in 1:3 C.M. to all inside wall surface, channels and benching etc. and to top including making requisite umber of main and branch channels but excluding the cost of excavation back filling and disposal of excavated stuff, manhole cover and frame. | 04 Nos.  | 6481.66    | 25,926.64    |



428

| Sr. No. | PWD Schedule 2012    | Description  | Qty.    | Rate (Rs.) | Amount (Rs.) |
|---------|----------------------|--|---------|------------|--------------|
| 22      | Code # 301 Item # 01 | Providing and fixing best quality squatting type white glazed earthenware W.C Pan, Pakistani (of not less than 18 Inches clear opening as measured between flushing rims) complete with and including the cost of 13.6 litre best quality low level plastic flushing cistern with internal fittings complete, P.V.C. flushing pipe suitable for squatting type with extra bends and length with fittings, C.I. trap 4 inches (100mm) dia and making requisite number of holes in walls, plinth & floor for pipe connection and making good in cement concrete 1:2:4..                  | 03 Nos. | 3,424.91   | 10,274.73    |
| 23      | Code # 301 Item # 06 | Providing and fixing Pakistani make best available quality European style white glazed earthenware wash down W.C.Pan complete with and including the cost of a plastic seat (PVC cover and buffers 3 galls. (13.6 litres) white glazed earthenware low level flushing cistern with siphon fittings, 1-1/2 inches (40mm) dia white porcelain enamelled flush bend, 3/4 inch (20mm) dia, G.I. warning pipe carried outside and bent vertically downwards and making requisite number of holes in walls, plinth and floor for pipe connections and making good in cement concrete 1:2:4.. | 02 Nos. | 4804.67    | 9,609.34     |
| 24      | Code # 301 Item # 25 | Providing and fixing approved quality earthen ware glazed vanity basin standard size (White/light colour) and including the cost of 1-1/4" dia brass waste 1-1/4" rubber plug and chrome plated brass chain PVC waste pipe 1-1/4" dia of approved pattern etc. complete.   | 02 Nos. | 6611.13    | 13,222.26    |
| 25      | Code # 302 Item # 05 | Providing and fixing 24 inches x 18 inches (610 mm x 457 mm) looking mirror of Imported glass 5 mm thick fixing with CP clamps and screws  | 04 Nos. | 595.30     | 2,381.20     |
| 26      | Code # 302 Item # 02 | Providing & fixing chromium plated Muslim bib-cock without Muslim Shower of approved quality.  | 02 Nos. | 720.94     | 1,441.88     |
| 27      | Code # 317 Item # 12 | Fixing floor traps of sizes with gratings including cutting and making the requisite number of holes in walls, plinth and floors and making good in 1:2:4 C.C..  | 06 Nos. | 294.95     | 1,769.70     |
| 28      | Code # 305 Item # 01 | Providing G.I. pipes, specials and clamps etc., including fixing cutting and fitting complete with and including the cost of breaking through walls and roof, making good etc., painting 2 coats after cleaning the pipe etc.; with white zinc paint with pigment to match the colour of the building and testing with water to a pressure head of 200 feet (61 M) and cartages within 10 miles (16.09 km.) (ILLM). 1/2 inch (15mm) dia pipe.  | 100 Rft | 67.82      | 6,782.00     |
| 29      | Code # 305 Item # 02 | Providing & fixing 3/4 inch (20 mm) dia pipe. (ILLM).  | 80 Rft  | 88.28      | 7,062.40     |
| 30      | Code # 305 Item # 03 | Providing & fixing 1 inch (25 mm) dia pipe (ILLM).   | 80 Rft  | 127.74     | 10,219.20    |
| 31      | Code # 307 Item # 06 | Providing and fixing 1/2 inches (15 mm) dia full way gun metal valves with wheels threaded or flanged ends with rubber washers, (standard pattern)..   | 02 Nos. | 554.75     | 1,109.50     |
| 32      | Code # 307 Item # 07 | Providing & fixing 3/4 inch (20 mm) dia Do..   | 05 Nos. | 884.75     | 4,423.75     |
| 33      | Code # 307 Item # 08 | Providing & fixing 1 inch (25 mm) dia Do...  | 02 Nos. | 884.75     | 1,769.50     |
| 34      | Code # 302 Item # 12 | Providing and fixing Royal bath room accessories of set of 6 pieces consist of one towel rod with bracket, one tooth brush holder with glass and cover, one double hook one towel ring etc complete of approved quality as per direction of Engineer in-charge.  | 01 No.  | 4,756.62   | 4,756.62     |
| 35      | Code # 306 Item # 24 | Providing and fixing un platized polyvinyl chloride pipe (P.V.C) "D" class and specials etc. including cutting and fitting complete with and including the cost of cutting trench upto 1-1/2 feet deep refilling, watering, ramming, and disposal of surplus earth within one chain and after cleaning the pipe and cartage within 10 miles (16.09 km.) (working pressure 12 kg/cm2 ) 3 inches (80 mm) dia pipe..  | 40 Rft  | 207.10     | 8,284.00     |
| 36      | Code # 306 Item # 25 | Providing and fixing un platized polyvinyl chloride pipe (P.V.C) "D" class and specials etc. including cutting and fitting complete with and including the cost of cutting trench upto 1-1/2 feet deep refilling, watering, ramming, and disposal of surplus earth within one chain and after cleaning the pipe and cartage within 10 miles (16.09 km.) (working pressure 12 kg/cm2 ) 4 inches (100 mm) dia pipe..   | 40 Rft  | 328.35     | 13,134.00    |

Brick & Wire  
Pvt. Ltd.

15/02/2022



427433

| Sr. No.                                     | PWD Schedule 2012        | Description  | Qty.     | Rate (Rs.) | Amount (Rs.) |
|---|--------------------------|--|----------|------------|--------------|
| 37  | Code # 306<br>Item # 27  | Providing and fixing un platized polyvinyl chloride pipe (P.V.C) "D" class and specials etc. including cutting and fitting complete with and including the cost of cutting trench upto 1-1/2 feet deep refilling, watering, ramming, and disposal of surplus earth within one chain and after cleaning the pipe and cartage within 10 miles (16.09 km.) (working pressure 12 kg/cm <sup>2</sup> ) 6 inches (150 mm) diapipe. | 80 Rft   | 509.07     | 40,725.60    |
| 38  | Code # 117<br>Item # 62  | Providing and laying floor of 6mm (approx: 1/4") thick white glazed tiles 12" x12" (304mm x 304mm) of master make (Pakistani) first grade in ground floor laid over 1" (25mm) thick cement mortar 1:2 (1 cement and 2 sand) including jointing and washing the tiles with white cement slurry and curing etc. complete.  | 395 Sft  | 169.30     | 66,873.50    |
| 39  | Code # 118<br>Item # 49  | Providing and fixing 1/4"(6mm approx.) thick of Pakistani make first grade coloured glazed tiles 8"x 10" (203mm x 254mm) size in dado and skirting in ground floor over 1/2" (13mm) thick base of cement mortar 1:3 setting of tiles in slurry of grey cement over mortar base including filling the joint with white cement slurry to matching the colour and washing the tile, curing and cleaning etc. complete.          | 1116 Sft | 99.14      | 110,640.24   |
| 40  | Code # 122<br>Item # 172 | Painting three coats with weather shield paint deluxe (ICI) make of approved shade on plaster surface (External) and including the cost of cleaning the surface, sand papering etc. complete at any height in any floor.   | 950 Sft  | 14.06      | 13,357.00    |
| 41  | Code # 122<br>Item # 151 | Distempering with vinyl distemper (ICI) Dulux Paintex of approved make and shade in two coats over and including the cost of one priming coat of lime wash including sand papering, dusting, and filling the holes, cracks and inequalities, if any, at any height in any floor.   | 1050 Sft | 10.53      | 11,056.50    |
| 42  | Code # 122<br>Item # 160 | Painting wood work with synthetic enamel paint of approved make and shade two coats over and including the cost of one priming coat complete at any height in any floor.   | 160 Sft  | 25.85      | 4,136.00     |
| 43  | Code # 117<br>Item # 31  | Providing and laying M.S. reinforcement bars including cutting, bending, binding, wastage, overlaps (unless shown on drawing and placing in position on cement concrete precast chairs, tying with binding wire complete with cost of chairs, binding wire etc. in cement concrete floor complete.   | 300 Kg.  | 94.58      | 28,374.00    |
| Total of "A"                                |                          |  |          |            | 912,948.73   |
| 30% Premium: Add/Less % +1-                 |                          |  |          |            | 273884.619   |
| Total Amount of "A"                         |                          |  |          |            | 1186833.349  |
| <b>"B" Civil Works (Non-Schedule Items)</b> |                          |  |          |            |              |
| 01  | -                        | Removal of existing steel window and door frame with shutter very carefully and stacking at site as directed by the Engineer. 15 Nos. Window.  | 01 Job   | 12000      | 12000        |
| 02  | -                        | Reshaping of existing service tile counter, reduce as per required thickness including cost of laying of block masonry as required and removal of existing tile in all side counter. removal of unserviceable material outside the university limit. Complete in all respect as directed by the Engineer (Note: Measurement to taken on top surface)   | 100 Sft  | 300        | 30000        |
| 03  | -                        | Supply and filling selected approved moram soil obtain from outside sources lay in room area including compacting, braking, dressing, leveling and watering, consolidating by ramming in layer not less than 6" in depth to full compaction complete in all respect as directed by the Engineer.   | 800 Cft  | 55         | 44000        |
| 04  | -                        | Providing and fixing cement concrete 1:2:4 water spout 1'-6' long complete in all respect as directed by the Engineer.   | 02 Nos.  | 3000       | 6000         |
| 05  | -                        | Providing and fixing 2mm thick full body vinyl tile wood texture floor and skirting 4" high imported approved brand & size including cost of apply double horse cementex solution complete in all respect as directed by the Engineer.   | 800 Sft  | 448        | 358400       |
| 06  | -                        | Providing and laying one layer of local jute base felt 70lbs / roll of 10sqmt including cost of primer as per manufactures specifications and site condition with bonding coat of bitumen at 35lbs / 100 sft fine crushed stone chips @ 100sft sealing of edges etc. complete in all respect making of grooves where required.   | 410 Sft  | 100        | 41000        |

15/04/2012

Brick & Wire Pvt. Ltd.



452 426

| Sr. No.  | PWD Schedule 2012 | Description   | Qty.  | Rate (Rs.)                           | Amount (Rs.)                             |
|--|-------------------|---|---|--------------------------------------|--|
| 07   | -                 | providing and fixing ¾" thick marble piece on top Pre-Cast R.C.C Slab and block masonry at ablution area. Like galaxy black granite, ziarat white, or equivalent as per approved sample complete with chemical polish finished and rounded nosing complete in all respect as directed by the engineer.  | 75 Sft  | 400                                  | 30000                                    |
| 08   | -                 | <b>TOILET ACCESSORIES</b><br>Providing and fixing bathroom / toilet accessories as per approved sample including fixing with rowel plug and screw complete in all respect.<br><br>i. Soap dispenser as approved Master / equivalent brand.<br>ii. Bibcock heavy duty Master / equivalent<br>iii. Double bib cock with Muslim shower heavy duty Master / equivalent brand.<br>iv. Basin side pillar cock heavy duty master or equivalent.<br>v. Towel rail 2' - 0" long as approved Master / equivalent                | 04 Nos.<br>09 Nos.<br>02 Nos.<br>03 Nos.<br>02 Nos. | 2200<br>5000<br>6000<br>7000<br>5000 | 8800<br>45000<br>12000<br>21000<br>10000 |
| Total Amount of "B"                              |                   |   |   |                                      | 618200                                   |
| <b>"C" Electrical Works (Non-Schedule Items)</b> |                   |   |   |                                      |  |
| 01   | -                 | Providing and wiring of light & exhaust fan point controlled by one single pole switch of Clipsal or equivalent make, with 3 x 1.5mm <sup>2</sup> single core PVC insulated wire of Pakistan Cable or equivalent make, recessed on walls, slabs & columns canceled in ¾" PVC conduit of Jeddah or equivalent make, open in 25 x 25mm PVC casing of Adamjee or equivalent make, complete with all respect such as MS back box etc., as per drawing and, as approved by the Engineer / Directorate of Works & Services. | 11 Nos.   | 2300                                 | 25300                                    |
| 02   | -                 | Providing, fixing and Connecting of LED rod PC Tube light fixture 12 watt to 18 watt, 2000 lumens or above, 04 feet long original Philips, Osaka, Pier light or equivalent make, complete with all respect such as round cover & ceiling rose etc., as per drawing, and as approved by the Engineer / Directorate of Works & Services.  | 08 Nos.   | 3000                                 | 24000                                    |
| 03   | -                 | Providing, fixing and Connecting of 12" sweep exhaust fan with Louver metallic body type, Millat / Pak Fan or equivalent make, complete with all respect such as making cuts in wall for fan 12"x12" and provide wooden frame 12"x12" x 6"x ½" in pertal; round block & ceiling rose etc, as per drawing, and as approved by the Engineer / Directorate of Works & Services.  | 03 Nos.   | 7000                                 | 21000                                    |
| 04   | -                 | Providing, Wiring and Connecting (Circuit wiring) from existing DB to switch board & switch board to switch board with 2x2.5mm <sup>2</sup> + 1x1.5mm <sup>2</sup> single core PVC insulated wire of Pakistan Cable or equivalent make, recessed in/ on walls, slabs & columns, concealed in ¾" PVC conduit of Jeddah or equivalent make / open in 25x25mm PVC casing of Adamjee or equivalent make, complete with all respect as per drawing and as approved by Directorate of Works & Services.                     | 02 Nos.   | 7000                                 | 14000                                    |
| Total Amount of "C"                              |                   |   |   |                                      | 84300                                    |

#### SUMMARY OF COST

|                           |  |   |    |             |
|---------------------------|--|---|----|-------------|
| "A"                       | Total Amount against Civil Works (Schedule Items)          | = | Rs | 1186833.349 |
| "B"                       | Total Amount against Civil Works (Non-Schedule Items)      | = | Rs | 618200      |
| "C"                       | Total Amount against Electrical Works (Non-Schedule Items) | = | Rs | 84300       |
| TOTAL AMOUNT OF A + B + C |  | = | Rs | 1889333.349 |

Note:

Rates quoted in the bids must be include of all taxes (Income Tax and SRB).

**Brick & Wire**

Signature of Contractor with Seal

15/02/2022

15/02/2022

15/2/22



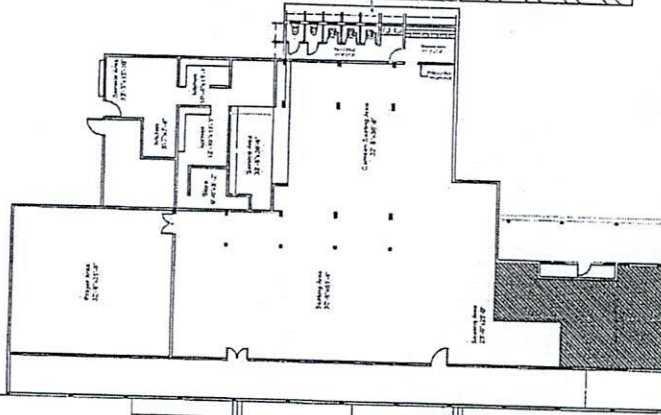
625  
H3T

# NED University of Engineering & Technology Directorate Works & Services

AUDITORIUM

Mechanical Engg. Labs

Electrical, Mechanical Engg. Dept. & Auditorium Corridor



Civil Engg. Dept. Corridor

Title  
Dwg. No. 01

Revised Proposed PLAN OF G.C.R

Drawn By Checked By Approved By Scale

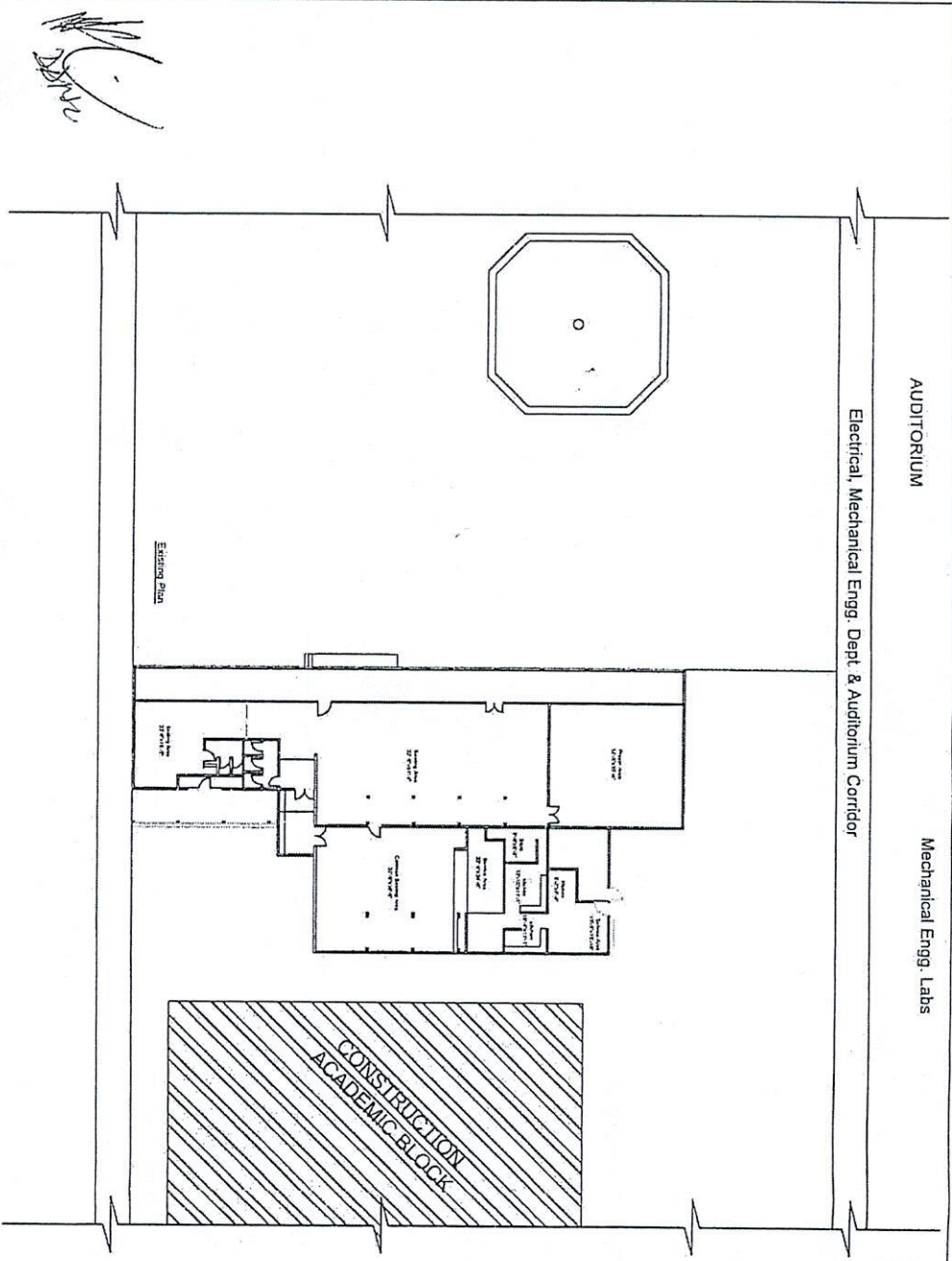
*[Handwritten signature]*

Brick & Wire  
Dvt. Ltd.

**NED University of Engineering & Technology**  
Directorate Works & Services

AUDITORIUM                      Mechanical Engg. Labs

Electrical, Mechanical Engg. Dept. & Auditorium Corridor



EXISTING PLAN OF G.C.R

| Title                  |    |          |            |             |       |
|------------------------|----|----------|------------|-------------|-------|
| Dwg. No.               | 01 |          |            |             |       |
| EXISTING PLAN OF G.C.R |    |          |            |             |       |
|                        |    | Drawn By | Checked By | Approved By | Scale |
|                        |    |          |            |             |       |

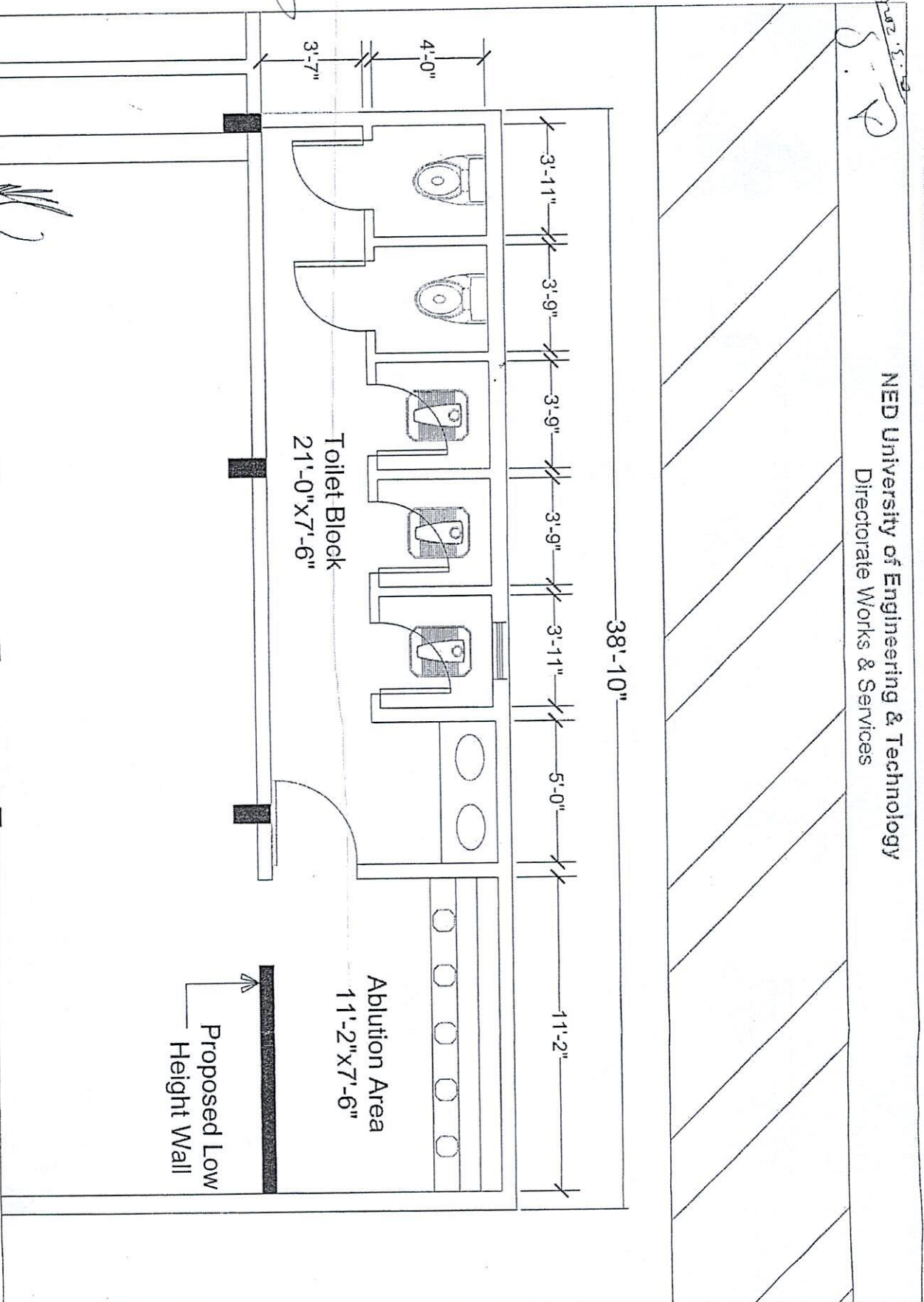
429  
423



NED University of Engineering & Technology  
Directorate Works & Services

5.5.3  
P

430424



Brick & Wire  
Pvt. Ltd

Title  
Dwg. 01  
No.

Handwritten signature

Drawn By  
Checked By  
Approved By

Scale

7/41



# SINDH PUBLIC PROCUREMENT REGULATORY AUTHORITY

## **CONTRACT EVALUATION FORM**

### **TO BE FILLED IN BY ALL PROCURING AGENCIES FOR PUBLIC CONTRACTS OF WORKS, SERVICES & GOODS**

- 1) NAME OF THE ORGANIZATION / DEPTT. NED UNIVERSITY
- 2) PROVINCIAL / LOCAL GOVT./ OTHER PROVINCIAL
- 3) TITLE OF CONTRACT Construction of Toilet Block at G.C.R. NED Main Campus
- 4) TENDER NUMBER PC/NED/DWS/Construction/7049/2022
- 5) BRIEF DESCRIPTION OF CONTRACT Construction of Toilet Block at G.C.R. NED Main Campus
- 6) FORUM THAT APPROVED THE SCHEME Syndicate
- 7) TENDER ESTIMATED VALUE 1.889 MILLION
- 8) ENGINEER'S ESTIMATE  
(For civil works only) \_\_\_\_\_
- 9) ESTIMATED COMPLETION PERIOD (AS PER CONTRACT) 03 Months
- 10) TENDER OPENED ON (DATE & TIME) 15-02-2022 10:30 AM
- 11) NUMBER OF TENDER DOCUMENTS SOLD 03  
(Attach list of buyers)
- 12) NUMBER OF BIDS RECEIVED 03
- 13) NUMBER OF BIDDERS PRESENT AT THE TIME OF OPENING OF BIDS Nil
- 14) BID EVALUATION REPORT  
(Enclose a copy) PROVIDED
- 15) NAME AND ADDRESS OF THE SUCCESSFUL BIDDER M/s. Brick & Wire (Pvt.) Ltd.
- 16) CONTRACT AWARD PRICE Rs. 1,889,333/-
- 17) RANKING OF SUCCESSFUL BIDDER IN EVALUATION REPORT  
(i.e. 1<sup>st</sup>, 2<sup>nd</sup>, 3<sup>rd</sup> EVALUATION BID). The Most Advantageous Bid

18) METHOD OF PROCUREMENT USED : - (Tick one)

- a) SINGLE STAGE – ONE ENVELOPE PROCEDURE YES ☐ Domestic/ Local
- b) SINGLE STAGE – TWO ENVELOPE PROCEDURE \_\_\_\_\_ ☐
- c) TWO STAGE BIDDING PROCEDURE \_\_\_\_\_ ☐
- d) TWO STAGE – TWO ENVELOPE BIDDING PROCEDURE \_\_\_\_\_ ☐

PLEASE SPECIFY IF ANY OTHER METHOD OF PROCUREMENT WAS ADOPTED i.e.  
EMERGENCY, DIRECT CONTRACTING ETC. WITH BRIEF REASONS:



Vice Chancellor

19) APPROVING AUTHORITY FOR AWARD OF CONTRACT \_\_\_\_\_

20) WHETHER THE PROCUREMENT WAS INCLUDED IN ANNUAL PROCUREMENT PLAN?

|     |                                     |    |                          |
|-----|-------------------------------------|----|--------------------------|
| Yes | <input checked="" type="checkbox"/> | No | <input type="checkbox"/> |
|-----|-------------------------------------|----|--------------------------|

21) ADVERTISEMENT :

i) SPPRA Website  
(If yes, give date and SPPRA Identification No.)

|     |                |
|-----|----------------|
| Yes | T00553-21-0116 |
| No  |                |

ii) News Papers  
(If yes, give names of newspapers and dates)

|     |  |
|-----|--|
| Yes |  |
| No  |  |

22) NATURE OF CONTRACT

|                    |                                     |      |                          |
|--------------------|-------------------------------------|------|--------------------------|
| Domestic/<br>Local | <input checked="" type="checkbox"/> | Int. | <input type="checkbox"/> |
|--------------------|-------------------------------------|------|--------------------------|

23) WHETHER QUALIFICATION CRITERIA  
WAS INCLUDED IN BIDDING / TENDER DOCUMENTS?  
(If yes, enclose a copy)

|     |                                     |    |                          |
|-----|-------------------------------------|----|--------------------------|
| Yes | <input checked="" type="checkbox"/> | No | <input type="checkbox"/> |
|-----|-------------------------------------|----|--------------------------|

24) WHETHER BID EVALUATION CRITERIA  
WAS INCLUDED IN BIDDING / TENDER DOCUMENTS?  
(If yes, enclose a copy)

|     |                                     |    |                          |
|-----|-------------------------------------|----|--------------------------|
| Yes | <input checked="" type="checkbox"/> | No | <input type="checkbox"/> |
|-----|-------------------------------------|----|--------------------------|

25) WHETHER APPROVAL OF COMPETENT AUTHORITY WAS OBTAINED FOR USING A  
METHOD OTHER THAN OPEN COMPETITIVE BIDDING?

|     |                          |    |                                     |
|-----|--------------------------|----|-------------------------------------|
| Yes | <input type="checkbox"/> | No | <input checked="" type="checkbox"/> |
|-----|--------------------------|----|-------------------------------------|

26) WAS BID SECURITY OBTAINED FROM ALL THE BIDDERS?

|     |                                     |    |                          |
|-----|-------------------------------------|----|--------------------------|
| Yes | <input checked="" type="checkbox"/> | No | <input type="checkbox"/> |
|-----|-------------------------------------|----|--------------------------|

27) WHETHER THE SUCCESSFUL BID WAS LOWEST EVALUATED  
BID / BEST EVALUATED BID (in case of Consultancies)

|     |                                     |    |                          |
|-----|-------------------------------------|----|--------------------------|
| Yes | <input checked="" type="checkbox"/> | No | <input type="checkbox"/> |
|-----|-------------------------------------|----|--------------------------|

28) WHETHER THE SUCCESSFUL BIDDER WAS TECHNICALLY  
COMPLIANT?

|     |                                     |    |                          |
|-----|-------------------------------------|----|--------------------------|
| Yes | <input checked="" type="checkbox"/> | No | <input type="checkbox"/> |
|-----|-------------------------------------|----|--------------------------|

29) WHETHER NAMES OF THE BIDDERS AND THEIR QUOTED PRICES WERE READ OUT AT  
THE TIME OF OPENING OF BIDS?

|     |                                     |    |                          |
|-----|-------------------------------------|----|--------------------------|
| Yes | <input checked="" type="checkbox"/> | No | <input type="checkbox"/> |
|-----|-------------------------------------|----|--------------------------|

30) WHETHER EVALUATION REPORT GIVEN TO BIDDERS BEFORE THE AWARD OF  
CONTRACT?  
(Attach copy of the bid evaluation report)

|     |                                     |    |                          |
|-----|-------------------------------------|----|--------------------------|
| Yes | <input checked="" type="checkbox"/> | No | <input type="checkbox"/> |
|-----|-------------------------------------|----|--------------------------|



31) ANY COMPLAINTS RECEIVED  
(If yes, result thereof)

|     |    |
|-----|----|
| Yes |    |
| No  | NO |

32) ANY DEVIATION FROM SPECIFICATIONS GIVEN IN THE TENDER NOTICE / DOCUMENTS  
(If yes, give details)

|     |    |
|-----|----|
| Yes |    |
| No  | NO |

33) WAS THE EXTENSION MADE IN RESPONSE TIME?  
(If yes, give reasons)

|     |    |
|-----|----|
| Yes |    |
| No  | NO |

34) DEVIATION FROM QUALIFICATION CRITERIA  
(If yes, give detailed reasons.)

|     |    |
|-----|----|
| Yes |    |
| No  | NO |

35) WAS IT ASSURED BY THE PROCURING AGENCY THAT THE SELECTED FIRM IS NOT  
BLACK LISTED?

|     |                                     |    |                          |
|-----|-------------------------------------|----|--------------------------|
| Yes | <input checked="" type="checkbox"/> | No | <input type="checkbox"/> |
|-----|-------------------------------------|----|--------------------------|

36) WAS A VISIT MADE BY ANY OFFICER/OFFICIAL OF THE PROCURING AGENCY TO THE  
SUPPLIER'S PREMISES IN CONNECTION WITH THE PROCUREMENT? IF SO, DETAILS TO  
BE ASCERTAINED REGARDING FINANCING OF VISIT, IF ABROAD:  
(If yes, enclose a copy)

|     |                          |    |                                     |
|-----|--------------------------|----|-------------------------------------|
| Yes | <input type="checkbox"/> | No | <input checked="" type="checkbox"/> |
|-----|--------------------------|----|-------------------------------------|


37) WERE PROPER SAFEGUARDS PROVIDED ON MOBILIZATION ADVANCE PAYMENT IN  
THE CONTRACT (BANK GUARANTEE ETC.)?

|     |                          |    |                                     |
|-----|--------------------------|----|-------------------------------------|
| Yes | <input type="checkbox"/> | No | <input checked="" type="checkbox"/> |
|-----|--------------------------|----|-------------------------------------|

38) SPECIAL CONDITIONS, IF ANY  
(If yes, give Brief Description)

|     |    |
|-----|----|
| Yes |    |
| No  | NO |

Signature & Official Stamp of  
Authorized Officer

  
Assistant Director Procurement-II  
Procurement Cell  
NED University of Engg. & Tech  
Karachi.

FOR OFFICE USE ONLY

**SPPRA, Block. No.8, Sindh Secretariat No.4-A, Court Road, Karachi**  
Tele: 021-9205356; 021-9205369 & Fax: 021-9206291

Print

Save

Reset



## Integrity Pact

### DECLARATION OF FEES, COMMISSION AND BROKERAGE ETC. PAYABLE BY THE SUPPLIERS/CONTRACTORS/CONSULTANTS.

Contract Number: R/NER/Construction/7049/22 Dated: 10/03/2022  
Contract Value: Rs. 1,00,000/-  
Contract Title: Construction of toilet Block at G.C.R main Building  
Brick & Wire Pvt Ltd

Brick & Wire Pvt Ltd [Name of Supplier/Contractor/Consultant] hereby declares that it has not obtained or induced the procurement of any contract, right, interest, privilege or other obligation or benefit from Government of Sindh (GoS) or any administrative subdivision or agency thereof or any other entity owned or controlled by it (GoS) through any corrupt business practice.

Without limiting the generality of the foregoing, Brick & Wire Pvt Ltd [Name of Supplier/Contractor/Consultant] represents and warrants that it has fully declared the brokerage, commission, fees etc. paid or payable to anyone and not given or agreed to give and shall not give or agree to give to anyone within or outside Pakistan either directly or indirectly through any natural or juridical person, including its affiliate, agent, associate, broker, consultant, director, promoter, shareholder, sponsor or subsidiary, any commission, gratification, bribe, finder's fee or kickback, whether described as consultation fee or otherwise, with the object of obtaining or inducing the procurement of a contract, right, interest, privilege or other obligation or benefit, in whatsoever form, from Procuring Agency (PA), except that which has been expressly declared pursuant hereto.

Brick & Wire Pvt Ltd [Name of Supplier/Contractor/Consultant] certifies that it has made and will make full disclosure of all agreements and arrangements with all persons in respect of or related to the transaction with PA and has not taken any action or will not take any action to circumvent the above declaration, representation or warranty.

Brick & Wire Pvt Ltd [Name of Supplier/Contractor/Consultant] accepts full responsibility and strict liability for making any false declaration, not making full disclosure, misrepresenting facts or taking any action likely to defeat the purpose of this declaration, representation and warranty. It agrees that any contract, right, interest, privilege or other obligation or benefit obtained or procured as aforesaid shall, without prejudice to any other right and remedies available to PA under any law, contract or other instrument, be voidable at the option of PA.

Brick & Wire Pvt Ltd Notwithstanding any rights and remedies exercised by PA in this regard, Brick & Wire Pvt Ltd [Name of Supplier/Contractor/Consultant] agrees to indemnify PA for any loss or damage incurred by it on account of its corrupt business practices and further pay compensation to PA in an amount equivalent to ten times the sum of any commission, gratification, bribe, finder's fee or kickback given by Brick & Wire Pvt Ltd [Name of Supplier/Contractor/Consultant] as aforesaid for the purpose of obtaining or inducing the procurement of any contract, right, interest, privilege or other obligation or benefit, in whatsoever form, from PA.

  
[Procuring Agency]

**Brick & Wire  
Pvt. Ltd.**

[Supplier /Contractor/Consultant]

**Brick & Wire  
Pvt. Ltd.**